

Royal Cliff Beach Hotel



353 Phra Tamnuk Road Pattaya

Opened in 1974 and extensively renovated in 2001, the Royal Cliff Beach Hotel helped earn the Royal Cliff Beach Resort its name for excellence. Now more attuned to the needs of the package holiday maker and slightly more budget conscious traveller, the Royal Cliff Beach Hotel offers superb value for money whilst still giving all the advantages of staying within the Royal cliff Beach Resort

Rates are valid from now until 26 December 2002

Room Type	Single	Double	Triple	Extra Guest
Mini Suite - Hotel Bldg. (11 Jan-26 Dec 02)	110	110	0	35
Theme Suite - Hotel Bldg. (11 Jan-26 Dec 02)	370	370	0	35

These rates are in U.S. Dollars and exclusive of 10% service charge and applicable tax

[Pre-booking enquiries](#) or [To book a room](#)



Mini Suites

Mini-Suites :

Large room with small separate step-up lounge area. Balconies with sea or garden view.

Theme Suites :

One and two-bedroom suites offering fabulous sea views, living room, bar area and large balconies with sunloungers. Each suite is specially themed from Bonsai to Maharajah to Admiral.

All rooms & suites offer individual air-conditioning, private safe, balcony or terrace, satellite TV, in-house movies, private bathroom, minibar, IDD telephone, bathrobe, hairdryer



Theme Suites



Services & Facilities :

- Check-out time 12 noon
- 24 hour room service
- 24 hour security
- Free Parking
- Helipads
- Concierge
- Electricity 220 volts
- Laundry, dry cleaning & pressing service
- Clinic with resident nurse and doctor on call
- Limousine services
- Currency Exchange
- Tour counter
- Beauty Salon / Barber / Hairdresser
- Shops
- Florist Counter
- Bakery
- Beach elevator
- Postal service
- Business Centre

Families & Children :

- Children's play area (indoor/supervised) and playground (outdoor)
- Children's pools
- Babysitting by arrangement
- Baby cots / High back chairs
- Children's menu

Sports & Recreation :

- 5 swimming pools (the swimming pool at the Royal Wing is exclusively for Royal Wing guests)
- Cliff Club (swimming pools, fitness centre, sauna / steam room, table tennis)
- 6 floodlit tennis courts & 2 practice courts
- Tropical park / garden with jogging trail
- Watersports - jet ski, water ski, scuba diving, deep sea fishing (watersports are not operated by the resort)
- 3-hole putting green within the resort / 18 championship standard golf courses in the area
- Resort catamaran (regular trips to nearby tropical islands, food & beverage service on board)



240 Beach Road, North Pattaya

Set amid 10 acres of luxuriant gardens, at the quiet northern end of Pattaya's crescent-shaped bay, the Amari Orchid Resort is as relaxing as it is colourful.

The focal point for all the entertainment, shopping and commercial development on the Eastern Seaboard, Pattaya nevertheless reveals its true nature with glorious sunshine and miles of beach front.

Rates are valid from now until 31 October 2002

Room Type	Single	Double	Triple	Extra Guest
Superior - Weekday (16 Jan-31 Oct 02)	40	45	0	0
Superior - Weekend (16 Jan-31 Oct 02)	50	55	0	0
Deluxe (16 Apr-31 Oct 02)	80	85	0	0

Rates are in U.S. Dollars inclusive of American Breakfast, subject to 10% service charge and VAT

[Pre-booking enquiries](#) or [To book a room](#)

**Superior Room****Deluxe Room****Junior Suite**

The 236 comfortable guest rooms and suites have spacious interiors tastefully furnished and decorated with bright local fabrics, all rooms boast colourful views of either the blue waters of Pattaya Bay or the vivid colours of the exotic landscaped gardens

Relax in comfort in the well-appointed superior rooms.

- The fully air-conditioned rooms offer:
- Local and multi-language satellite T.V.
- Private bathroom with bath or shower
- Mini bar
- International direct dial telephone
- Personal safe
- Hairdryer

Deluxe rooms are larger than superior rooms.

Some of the rooms have been recently upgraded and feature :

- Stylish modern decoration
- An ergonomically designed work desk
- Dual telephone sockets for easy internet access
- Tea and coffee making facilities
- Daily fruit tray



Services and Facilities :

- 24-hour reception, porter and concierge
- Postal services
- Business services including secretarial, e-mail and Internet access
- Foreign exchange
- Express laundry
- Baby sitter
- Shopping arcade and beauty salon
- Tour desk
- Parking
- Car hire

Sports and Recreation :

- 2 outdoor swimming pools
- full range of water sports (available nearby)
- jogging track
- Badminton
- 2 Tennis Courts
- Scuba Diving Centre
- Fitness room
- Daily activity programme
- Jasmina Spa offering a full range of massage

URL : <http://www.e-biz-travel.com>

Tel : +66 2636-0232 to 3

E-Mail : susan@e-biz-travel.com

Fax : +66 2236-3386

Asia Pattaya Beach Hotel



Cliff Road, Pattaya Thailand

Situated high on the famous cliff overlooking the Gulf of Thailand, the Asia Pattaya is set amidst 22 acres of exotic palm-fringed gardens and commands a picturesque view of the sea and surrounding islands. Pattaya City is only a short drive away.

Special Rates For Airline Staff ... [Click here](#)

[Booking](#) Special Rate for Airline Staff

Special Promotion!!

From Now - 30 June 2002

Room Type	Special Promotion
Golf View (Single/Twin/Double)	Baht 1,400 nett + ABF
Sea View (Single/Twin/Double)	Baht 1,700 nett + ABF

Rates are inclusive of 10% service charge and 7% government tax and American Breakfast

A Child under 12 years stay in parent's room without extra bed - no charge for room, compulsory breakfast at Baht 125 nett

Rates are valid from now until 10 January 2003

Room Type	Single	Double	Triple	Extra Guest
*Golf View + ABF (1 Apr-30 Jun 02)	1400	1400	0	0
Golf View (1 Jul-19 Dec 02)	1190	1190	0	500
*Sea View + ABF (1 Apr-30 Jun 02)	1700	1700	0	0
Sea View (1 Jul-19 Dec 02)	1490	1490	0	500
Executive Suite (15 Apr-19 Dec 02)	2150	2150	0	500
Executive Suite (20 Dec 02-10 Jan 03)	2800	2800	0	500
Asia Suite 1 Bedroom - G/V (15 Apr-19 Dec 02)	2450	2450	0	500
Asia Suite 1 Bedroom - G/V (20 Dec 02-10 Jan 03)	3200	3200	0	500

From Now-30 Jun 02, Golf View & Sea View room is nett including ABF, service charge and VAT*

These rates are in Thai Baht, exclusive of 10% service charge and 7% VAT

[Pre-booking enquiries](#) or [To book a room](#)



The entire hotel is fully air-conditioned with individual temperature control in each of the 320 luxurious rooms and suites, which include color television, telephone, piped music, refrigerator, marble bathroom hot and cold running water



Swimming Pool : Large pool with 2 spring boards, children's pool with slide board. With bar and fountain in the center, the pool is set amidst scenic surroundings and besides swimming, is ideal for relaxing in the sun.

Children's Playground : Swings and see-saws are the highlight of our children's playground right beside the cliff garden.

Parking Lot : The hotel's parking lot has ample parking space and full security.

Massage -Traditional Thai Massage is available.

Sports : Golf Course, Snooker Club, Tennis Court, Water Sports, etc.

URL : <http://www.e-biz-travel.com>

E-Mail : susan@e-biz-travel.com

Tel : +66 2636-0232 to 3

Fax : +66 2236-3386



557 Cliff Road, South Pattaya

Baiyoke Pattaya Hotel is conveniently nestled in the heart of Pattaya, one of Asia's most exciting resorts and a true world-class destination. Easy access to the beach, to the largest shopping area and to the resort's exciting nightlife area. The hotel provides first class accommodation with an intimate atmosphere and helpful, hospitable service.

Rates are valid from now until 31 December 2002

Room Type	Single	Double	Triple	Extra Guest
Run of House	700	800	1150	0

These Rates are nett in Thai Baht, inclusive of 10% service charge and 7% VAT

[Pre-booking enquiries](#) or [To book a room](#)



All 136 rooms are spacious and tastefully designed either overlooking the sea or the wooded hills

Room Facilities :

- Minibar
- Refrigerator
- Air conditioned
- 220v bathroom outlets
- Colour TV with Satellite TV & Cable
- Local / International Phone call



Meeting Equipment Facilities :

Sound Equipment, Tape Recorder, Overhead Projector, Microphone, Slide Projector, Screen, TV & Video Equipment, Display Boards, White Boards, Flip Charts, Podium, Stage, Dance Floor

Recreation Facilities :

- Outdoor swimming pool
- Traditional Thai Massage
- Snooker Club

Beach View Hotel



389 Beach Road, North Pattaya

Located on the beach front at North Pattaya, the only place where sand, sea and sun are still splendid. Enjoy the superb view of Pattaya Beach, only at the Beach View Hotel.

Special facilities for enjoyment and excitement. Sun-bathing at the swimming pool with sun-deck, table-tennis, dart playing, garden and all kinds of water sports can be enjoyed by arrangement on the beach such as windsurfing, sailing, fishing, etc.

Special Internet Rates

Room Type	Single	Double	Triple	Extra Guest
Standard	650	650	0	0
Superior	890	890	0	300
Suite	1290	1290	0	300
Standard (Peak period*)	850	850	0	0
Superior (Peak period*)	1200	1200	0	300
Suite (Peak period*)	1500	1500	0	300

[Pre-booking enquiries](#) or [To book a room](#)



The only better thing than the beach outside is the inside of our accommodation rooms with private balconies looking out over the bay of Pattaya, separate bathrooms refrigerator, colour television, telephone, minibar, room service and daily laundry deliveries



Special facilities for enjoyment and excitement. Sun-bathing at the swimming pool with sun-deck, table-tennis, dart playing, garden and all kinds of water sports can be enjoyed by arrangement on the beach such as windsurfing, sailing, fishing, etc.

Occasionally, do like the seafarers, enjoy succulent seafood special and Bar-B-Q at the " Chao Lay Restaurant " overlooking the sea. Also, the main restaurant with air-conditioning offers Thai, Chinese and European food at very reasonable prices.

Central Wong Amat Beach Resort



277-8 Naklua Soi18, Pattaya City

Situated at the entrance to Thailand's premier seaside resort, Central Wong Amat Beach Resort offers guests an unparalleled holiday on Pattaya's only private beach on a 2 miles stretch of sand. Pattaya is conveniently accessible by private car or coach, and only 2 hours' drive from Bangkok.

Central Wong Amat Beach Resort, a low-rise garden complex offering both rooms and bungalows complemented by a variety of restaurants & bars, and recreation facilities. The perfect setting for fun and relaxation.

Rates are valid from now until 31 October 2002

Room Type	Single	Double	Triple	Extra Guest
Standard	1820	1820	0	700
Superior	2100	2100	0	700
Deluxe (seaview)	2450	2450	0	700
Bungalow superior 2 bedrooms	3080	3080	0	700
Junior Suite	2940	2940	0	700
Bungalow Deluxe 2 Bedrooms	4340	4340	0	700
Bungalow 3 Bedrooms	4550	4550	0	700

Rates are in Thai Baht, subject to 10% service charge and 7% VAT

[Pre-booking enquiries](#) or [To book a room](#)



Central Wong Amat Beach Resort has 85 deluxe rooms and suites in a complex of low-rise units designed to blend in with its natural surroundings, as well as 91 private chalet and bungalow rooms with ocean and garden views.



Standard room features include air-conditioning, multi-channel satellite television reception, in-room video movies, a mini-bar and 24-hour room service.



Two tennis courts, Two swimming pools, Children's playground, Sun deck, Sailing, Windsurfing, Scuba diving, Deep-sea fishing, Para-sailing, Water skiing, Horseback riding and excursions to nearby Coral Island, Motorcycle and Jeep rental available.

Services and Facilities :

- Beauty salon
- Boutique

- Golf arrangement
- Car parking
- Foreign exchange

- Medical service on request
- Post and parcel service
- Safe deposit box

Cosy Beach Hotel



400 Cliff Road, South Pattaya

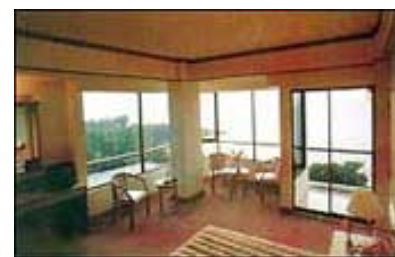
Enjoy the superb sea views from the clifftop of Cosy Beach Hotel, with all the facilities of a Beach Hotel. All rooms are exclusively furnished with full bedroom amenities to fulfill a leisure travellers' needs.

Rates are valid from now until further notice

Room Type	Single	Double	Triple	Extra Guest
Standard + ABF (18 Apr-19 Dec 02)	790	790	0	0
Superior Sea View + ABF (18 Apr-19 Dec 02)	1490	1490	0	450
Suite-Cosy Wing (18 Apr-19 Dec 02)	1290	1290	0	450
Superior-Main Wing (18 Apr-19 Dec 02)	1290	1290	0	450
Mini Suite (18 Apr-19 Dec 02)	1690	1690	0	450

These rates are nett in Thai Baht and inclusive of service charge and VAT per room per night

[Pre-booking enquiries](#) or [To book a room](#)

**Standard Room****Superior and Superior Sea View****Mini Suite Room**

Standard Rooms, located in our original building, are suitable for economy holiday while enjoying same facility as our superior rooms.

Superior and Superior Sea View, located in the new tower wing are afforded sea view and mountain view. They are tastefully designed and furnished in a tropical style

All rooms are wall-to-wall carpets, with air conditioning, hot and cold shower, refrigerator, IDD telephone, radio, satellite television and minibar. They are complete with room service and daily laundry deliveries.



Two swimming pools are provided, one with jacuzzi and with steps leading down to the quiet sandy beach.

The Cosy Coffee Shop, overlooking the sea, serves a wide selection of Thai, Chinese and European cuisine. You can enjoy a romantic dinner by the pool, with wide arrays of local seafood delicacies and barbecue.

Cosy Beach Hotel is located on its own quiet and sandy private beach, surrounded by lush natural vegetation, beautiful garden, away from the crowd.

All water sports are available, windsurfing, parasailing, waterskiing and fishing

Dusit Resort Pattaya Beach



240/2 Pattaya Beach Road

A beach resort endowed with city status, Dusit Resort offers a unique blend of urban efficiency and seaside leisure. It combines the natural delights of sun, sea and sand with the fun and excitement of a metropolis. Pattaya City is a thriving and pulsing tropical vacation community, situated along the Gulf of Siam, a short-two hour drive from Bangkok. It is renowned for its sun-drenched beach life, myriad of water sports, extensive array of seafood dining and diverse nightlife entertainment.

Rates are valid from now until 31 October 2002

Room Type	Single	Double	Triple	Extra Guest
Superior Seaview (1 May-19 Dec 02)	110	110	0	23
Landmark Deluxe 2nd Flr Sea View (1 May-19 Dec 02)	150	150	0	23
Landmark Deluxe 8th Flr Sea View (1 May-19 Dec 02)	190	190	0	23
One Bedroom Suite Garden View (1 May-19 Dec 02)	220	220	0	23
One Bedroom Suite Sea View (1 May-19 Dec 02)	260	260	0	23
Two Bedroom Suite Sea View (1 May-19 Dec 02)	0	350	350	23

Rates are in U.S. Dollars, exclusive of 10% service charge and applicable government tax., **Breakfast is included for Landmark and Suite**

[Pre-booking enquiries](#) or [To book a room](#)



All rooms feature individually controlled air-conditioning, direct dial telephone, mini bar with refrigerator, full sprinkler system and heat detectors, hair dryer, in-room safe, radio, remote controlled television with satellite channels, turndown service and electricity 220 V.



Other facilities & services :

- 24-hour room service
- Baby-sitting service
- Barber shop
- Beauty salon
- Business center
- Dusit Shop with a selection of bakery and pastry items

- Car rental
- Tour counter
- Concierge
- Souvenirs
- Thai handicraft & artwork
- Laundry/valet
- Limousine service

- Money exchange
- Shopping gallery
- Jewelry shop
- Tailor
- Boutiques
- Drug store





378/3-11 Phra-Tamnuk Road,
Pattaya

Dynasty Resort is a newly opened family-typed resort (January 2000) nestled on the only hill in Pattaya. We offer guests a surprisingly unique concept -- a seamless blend of Thai elegance and uncompromising luxury with peaceful surroundings.

With spacious modern teakwood furnished rooms and one-bedroom Traditional Thai-style houses, a big swimming pool with Jacuzzi, and full-service Thai and international restaurant, Dynasty Resort brings together a traditional Thai touch artfully blended with modern convenience.

Rates are valid from now until 31 May 2002

Room Type	Single	Double	Triple	Extra Guest
Deluxe	1200	1200	0	500
Thai-style Bungalow	1200	1200	0	500
Superior	1400	1400	0	500
Junior Suite	1600	1600	0	500
One-bedroom Suite	2200	2200	0	500

Rates are nett in Thai Baht, inclusive of American Breakfast, service charge and VAT

[Pre-booking enquiries](#) or [To book a room](#)



- 39 spacious deluxe rooms, fully carpeting floors stylishly with glorious teakwood
- 21 suites with large balcony or terrace: 2 family suites; 4 superior suites & 3 junior suites with kitchens; 6 superior & 6 junior suites
- 9 one-bedroom Thai style bungalows with private kitchen and spacious verandah

Room features :

- View of swimming pool and our landscaped gardens
- 21" color TV with satellite (CNN, CNBC, sports and movie programs)
- Private bathroom with hot & cold water
- Minibar and refrigerator
- Direct dial telephone system
- Individually controlled air conditioners



- Restaurant serving Thai and international cuisine
- Large outdoor swimming pool (overflow-system) with jacuzzi, children's pool, pool basketball
- Table tennis, snooker
- Room service, daily laundry service, currency exchange service, e-mail & internet service, free safe deposit boxes
- Free shuttle bus to downtown Pattaya
- Motorcycle and car rental service, car parking space



Garden Beach Resort



445/3 Moo 5 Soi Wongamart, Pattaya

Just two hours drive from Bangkok, The Garden Beach Resort boasts one of the most spectacular beachfront locations on the Eastern shore of the Gulf of Thailand. Offers everything you need for a perfectly relaxing and indulgent holiday. A warm welcome from our staff in the graceful and friendly manner distinctive of Thai hospitality. Relax and enjoy your day with live music and select your favourite drink at the lobby bar. Our cosy lobby is a perfect setting for you to relax alone or with a group of friends.

Rates are valid from now until 31 October 2002

Period	Single	Twin/Double	Triple
11 Jan, 2002 - 31 Oct, 2002	Baht 2,190 nett	Baht 2,190 nett	Baht 3,120 nett

Rates are nett in Thai Baht, inclusive of American Breakfast, service charge and VAT

Enquiry or Booking



Accommodation in Tower Building :

The resort offers 287 spacious, Superior and Deluxe rooms, as well as exquisite Junior Suites and Royal Suites, each with a balcony overlooking the sea.

Accommodation in Garden Villa :

The resort also provides 103 luxurious rooms in our Garden Villa, each with a balcony offering views of the beautiful lush tropical flower gardens.

Room Features :

- Individually controlled air-conditioning
- Refrigerator
- Mini bar
- Satellite television
- In-house video programs

- Radio
- Wall to wall carpet
- IDD telephone
- Hot & cold water
- Sea-facing balcony

- Sprinkle head
- Heat detector
- Writing desk
- Living area
- Dining area



Hotel Features :

- Room service
- Lobby bar
- Conference facilities
- Banquet facilities
- Coffee shop
- Restaurant
- Poolside bar
- Laundry service

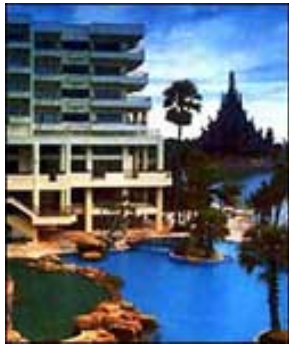
Recreation & Fitness :

- Swimming pools
- Snooker room
- Sauna
- Botanical gardens
- Water sports

Fascinating Garden :

Our resort is surrounded by tropical shrubbery, and offers a spectacular flower garden, and a waterfall. All are just a few paces away from the pool and sandy beach.

Garden Sea View Resort



282/3 Pattaya Naklua Road

The Garden Sea View Resort offer 288 luxurious rooms and bungalows are elegantly furnished and decorated, set on beautiful beach with a full range of water sport, sunbathing facilities and mini golf dive off. The large swimming pool nearby private beach and impeccable service of our staff from beach bar will make your holiday as paradise in Pattaya that money alone can never buy.

Room Type	Single	Double	Triple	Extra Guest
Run of House (25 Dec 01-15 Jan 02)	4000	4200	4800	0
Run of House (16 Jan-28 Feb 02)	2250	2500	3150	0
Run of House (1 Mar-31 Oct 02)	1800	2000	2650	0

[Pre-booking enquiries](#) or [To book a room](#)



Chalet' Air-conditioned rooms. Private bathroom, Hot and cold water, colour television and Video, satellite programs, on the private beach, two swimming pool, water fall.



The large swimming pool nearby private beach and impeccable service of our staff from beach bar will make your holiday as paradise in Pattaya that money alone can never buy.



75/261 Jomtien Beach Road, Pattaya

The Jomtien Thani Pattaya's newest hotel. A perfect seaside setting and gorgeous views that sweep out to the horizon these are just two of the features that help make the Jomtien Thani Hotel an ideal place to relax.

Located only a little over one hundred kilometers from Bangkok, Pattaya is know worldwide as a modern business and entertainment center that never sleeps

Rates are valid from now until 31 October 2002

Room Type	Single	Double	Triple	Extra Guest
Standard (11 Jan-31 Oct 02)	1100	1100	1500	0

Rates are nett in Thai Baht, inclusive of American Breakfast, service charge and VAT

[Pre-booking enquiries](#) or [To book a room](#)



There are 246 spacious rooms, all furnished for comfort and convenience and complete with private balconies where you can enjoy the fresh breeze



Luxury facilities include a rooftop swimming pool with reclining chairs for sun-bathing, a sauna, a fully-equipped gym, traditional Thai massage, and convenient shopping. Large and medium-sized meeting rooms with a seating capacity of 250 are available for your business needs.



193 Naklua Road, Pattaya City

A home away from home where you can relax under the tropical sun, or enjoy a city which has all kinds of entertainment day and night. Pattaya City, a city that never sleeps.

Rates are valid from now until 31 October 2002

Room Type	Single	Double	Triple	Extra Guest
Standard (16 Mar-31 Oct 02*)	792	792	0	220
Family Suite (16 Mar-31 Oct 02*)	1980	1980	1980	220

Rates are nett in Thai Baht and inclusive of service charge and VAT.

Family Suite - 2 Bedrooms & 1 Living Room

[Pre-booking enquiries](#) or [To book a room](#)



We have three room types for you to choose from : Single, Double, or Suites. All rooms feature air-conditioning, mini-bar, telephone, bathtub with hot and cold water, and television. The television has both local and international programmes, including a German channel (Deutsche Welle). Safety deposit boxes are available free of charge at the front desk.



Our hotel buildings were built in a low-rise resort style. It is designed as a family-oriented resort. It is quiet, relaxing, and peaceful. Most of the rooms are facing to our big free-form swimming pool, surrounded by tropical garden. The pool has a swim-up bar, a children's pool, and a whirlpool at the corner.

We have an informal ambiance which allows you to feel relaxed in our green environment. Our staff are friendly and willing to cater to your every need. That's why our repeat guests keep coming back every year.

Montien Pattaya Hotel



369 Pattaya Second Road.

The Montien Hotel, Pattaya, located on the coral sandy beach fronting Central Pattaya Bay, offers a panoramic ocean view and is within walking distance to major entertainment venues, shopping centres, water sports facilities and transits to tourist attractions.

Rates are valid from Now until 30 September 2002

Room Type	Single	Double	Triple	Extra Guest
Superior (1 Apr-30 Sep 02)	2300	2500	0	942
Executive Superior (1 Apr-30 Sep 02)	2600	2900	0	942
Executive Deluxe (1 Apr-30 Sep 02)	4000	4000	0	942
Family Suite (1 Apr-30 Sep 02)	4800	4800	0	942

Rates are in Thai Baht and exclusive of 10% service charge and 7% VAT

[Pre-booking enquiries](#) or [To book a room](#)



All 300 rooms offer spectacular ocean view with private balconies, distinctly providing total comfort in a touch of Thai decoration with individual air-conditioning and all the amenities of an international hotel.



- Guest Services Centre
- Shopping Arcade
- Fitness Centre with Gymnasium and Suana
- Outdoor Pool & Jacuzzi

- Tour and Transportation Desk
- Barber Shop / Beauty Salon
- Floodlit Tennis Courts
- Children's Playground

Mountain Beach Hotel



378/16 Cliff Road, Pattaya City

Located on a hill in South Pattaya, this modern luxury hotel offers an excellent panoramic view of the sea with superb cuisine and great leisure facilities.

Rates are valid from now until 31 October 2002

Room Type	Single	Double	Triple	Extra Guest
Superior	1000	1200	0	0
Deluxe	1625	1625	0	0
Junior Suite	2150	2150	0	0

These rates are nett in Thai Baht and inclusive of American Breakfast, service charge and VAT

[Pre-booking enquiries](#) or [To book a room](#)



Superior room : 152 rooms (22 sq.m.)
 Deluxe room : 15 rooms (30 sq.m.)
 Junior suite (One Bedroom): 2 rooms (44 sq.m.)

All rooms are fully equipped with air conditioning, refrigerator, mini-bar, bathtub with hot and cold water, satellite TV, and IDD telephone.



- Adult Swimming Pool
- Children Swimming Pool
- Tour Desk
- Gift Shop
- Jacuzzi
- Baby Cot

- Baby Sitter services (chargeable)
- Money Exchange counter
- Car Park space
- Internet Room
- Fitness Center
- Western, Chinese, International Food

Nearby Attractions within walking distance : South Pattaya

Nearby Attractions within 15 minutes by car : Central Pattaya

Distance from Beach : 80 meters to beach

Distance from Airport : 150 kilometers approximately 2.5 hours from Bangkok International Airport or 60 kilometers approximately 1 hour from U-tapao Airport by car



412 Jomtien Beach Road

Natural Park Resort is a luxurious hideaway on Jomtien Beach, a finer stretch beyond the world famous Pattaya Beach. Spanning over four acres of sandy shore, the Natural Park Resort features a new concept in holiday making combining the pleasures of the park and the sea.

Rates are valid from now until 31 October 2002

Room Type	Single	Double	Triple	Extra Guest
Superior (19 Feb-31 Oct 02)	900	900	0	300
Junior Suite (19 Feb-31 Oct 02)	1500	1500	0	300
Bungalow (19 Feb-31 Oct 02)	0	2500	2500	0

Rates are nett in Thai Baht and inclusive of American Breakfast, service charge and VAT per room per night

Junior Suite - 1 Bedroom & 1 Sitting room, Bungalow - 2 Bedrooms & 1 Sitting room

[Pre-booking enquiries](#) or [To book a room](#)



Each room or suite is tastefully appointed and equipped with modern amenities while attention is given to every detail in order to ensure the utmost comfort and relaxation. The Presidential Suite, the ultimate in luxury, comprises three ultra modern bedrooms, a sauna, a whirlpool, a living room, and a multi purpose room. Guests may also choose to luxuriate in one of the 14 junior suites or 48 superior rooms in the hotel building, or enjoy the dream like coziness of the split level houses in one of the 21 suites or three deluxe suites.



The Natural Park Resort is an ideal family holiday resort as well as a perfect place for seminar and convention. Comprehensive range of entertainment, dining and meeting facilities is offered along with impressive services and hospitality.

The restaurant, located at the split-level Club House, features fine dining indoor and alfresco style of Chinese, European, seafood and Thai cuisine.

And there is a games room to delight both the young and grown-up with much fun of snooker, computer games and more. The Club House also houses two meeting rooms to accommodate a party of 10 up to 100 persons, and a complete line of audio-visual equipment is also available.

For freshwater swimming, there are separate swimming pools for adults and children, both embraced in the beautiful garden off the Km 151 mark on Sukhumvit Road. It takes you less than two hours to find a paradise of greenery on this sun - kissed shore of the Gulf of Thailand. Come closer to nature, come to the Natural Park Resort .

Ocean Marina Yacht Club



274/1-9 Moo 4, Sukhumvit Hiway (km.157)

Welcome to Ocean Marina Yacht Club, Asia's premier marina and yacht club. Thailand's marvelous weather together with favourable winds and warm water make it a perfect place for year round sailing. Add to this gentle currents, a wide choice of spectacular beaches and tropical islands and you have the perfect setting for cruising or just relaxing. The Yacht Club also provides the services of a 5-star hotel, uniquely furnished in a nautical style. The hotel meetings and sports facilities are managed by Dusit Hotels & Resorts, Thailand's premier hotel group.

Rates are valid from now until 31 August 2002

Room Type	Single	Double	Triple	Extra Guest
Deluxe	100	100	0	0
One Bedroom Suite (Ocean View)	155	155	0	0
One Bedroom Suite (Marina View)	200	200	0	0
Two Bedroom Suite (Ocean View)	0	243	243	0
Two Bedroom Suite (Marina View)	0	289	289	0

Rates are in Thai Baht and exclusive of 10% service charge and 7% VAT

[Pre-booking enquiries](#) or [To book a room](#)



- Air-conditioning with individual control
- Colour T.V. with in house movies / world news
- International Direct Dialing (IDD)
- Mini bar & refrigerator



- Room Service
- In-room safe
- Full size working desk



The Yacht Club's meeting facilities provide a perfect venue for small to medium sized business meetings, seminars, dinners and cocktail receptions. Four meeting rooms can be adapted for a variety of occasions with seating up to 150 persons. The Sports Complex covers 6,800 square meter including 2 tennis courts, 2 squash courts, indoor and outdoor swimming pools, a snooker room, an aerobics room, a fitness center, men and women saunas, a games room and table tennis. The Sports Complex ranks as one of the biggest sports centers of the Eastern Seaboard in Thailand.

Other facilities :

- Foreign Exchange
- Laundry & Dry Cleaning
- Telefax
- Car Rental
- Covered Parking
- Electricity 220 V.
- Full sprinkler system and smoke detectors in all guest rooms and throughout the hotel

URL : <http://www.e-biz-travel.com>

Tel : +66 2636-0232 to 3

E-Mail : susan@e-biz-travel.com

Fax : +66 2236-3386

Pattaya Marriott Resort & Spa



218 Beach Road, Pattaya

By far the most convenient deluxe resort in Pattaya. Located on Beach Road, in the very centre of town, amid 14 acres of lush landscaped gardens, Pattaya Marriott Resort & Spa provides the perfect vantage point for holiday or business in Pattaya. You are just a few steps from the beach, shops, and restaurants, and yet, once you enter our open-air lobby, appointed in Thai and Burmese statuary, painting and tapestries, you are clearly inside a self-contained resort oasis.

Rates are valid from now until 31 October 2002

1 May - 31 October 2002			
Room Type	Single	Twin/Double	Triple
Garden View	Baht 3,500 nett	Baht 3,900 nett	Baht 5,950 nett
Sea View	Baht 4,050 nett	Baht 4,500 nett	Baht 6,550 nett
Garden Terrace	Baht 4,500 nett	Baht 4,900 nett	Baht 6,950 nett

25 December 2001 - 15 January 2002			
Room Type	Single	Twin/Double	Triple
Garden View	Baht 6,350 nett	Baht 6,750 nett	Baht 8,950 nett
Sea View	Baht 7,050 nett	Baht 7,500 nett	Baht 9,700 nett
Garden Terrace	Baht 7,500 nett	Baht 7,900 nett	Baht 10,100 nett

Rates are nett in Thai Baht, inclusive of American Breakfast, service charge and VAT

Enquiry or Booking



All of the resort's rooms are furnished to a very high standard with the emphasis on quality. Every room will have all the facilities you would expect including mini bar, coffee/tea making, T.V., music and everything you need to make your stay as comfortable as possible.

Experience the comforts of a truly regal home. In addition, each room has its own terrace or balcony with serene garden and ocean views. You will probably find yourself out here quite often enjoying the exceptionally pleasant ambience.



Hotel Services :

- Limousine Service
- Laundry & Valet Service
- Watersport Activities
- Sailing
- Live Entertainment
- Nearby-Golf
- 24-Hour Room Service

- Medical Doctor on Call
- Hotel Limousine Service
- Daily Laundry and Valet Services
- Baby-sitting Services
- Concierge Service
- Currency Exchange Service
- Motorcycle, Bicycle Rental

Hotel Facilities :

- Kids Club
- 3 International Restaurants
- Lounge
- 3 Bars
- 2 Tennis Courts (floodlit)
- Safety Deposit Boxes

- Fitness & Aerobics Center
- Business Centre with club Lounge
- Executive Meeting Rooms
- Royal Garden Spa with treatment rooms
- Swimming Pool with Jacuzzi
- Adjoining Royal Garden Shopping Plaza

Pattaya Park Beach Resort



345 Jomtien Beach, Pattaya

At Pattaya Park Beach Resort, you need not to enjoy only swimming in the sea, Here, you are challenged to join in the thrill of entertainments on our water slides or swim around the whirlpool, the only water park of Pattaya. The only better thing than the inside of our rooms in the outside.

Rates are valid from now until 31 October 2002

Room Type	Single	Double	Triple	Extra Guest
Standard (27 Dec 01-15 Jan 02)	2850	2850	3450	0
Standard (16 Jan-31 Mar 02)	1550	1550	2150	0
Standard (1 Apr-31 Oct 02)	1400	1400	2000	0
One Bedroom Suite (27 Dec 01-15 Jan 02)	3450	3450	3950	0
One Bedroom Suite (16 Jan-31 Mar 02)	2150	2150	2650	0
One Bedroom Suite (1 Apr-31 Oct 02)	2000	2000	2450	0
Two Bedroom Suite (27 Dec 01-15 Jan 02)	4200	4200	4650	0
Two Bedroom Suite (16 Jan-31 Mar 02)	2900	2900	3350	0
Two Bedroom Suite (1 Apr-31 Oct 02)	2550	2550	3000	0

[Pre-booking enquiries](#) or [To book a room](#)



Our fabulous resort situated at top of Jomtien secluded beach, with all 730 luxurious sea-view room and suites.



The hotel is fully facilitated with banquet and conference rooms, fitness center, sauna, snooker room, shopping arcade and exclusive bathing area by the beach.

At Pattaya Park Beach resort, you need not to enjoy swimming in the sea, Here, you are challenged to join in the thrill of entertainments on our water slides or swim around the whirlpool, the only water park of Pattaya. The only better thing than the inside of our rooms in the outside.

Pinnacle Golden Beach Jomtien



5/1 Moo 2 Sukhumvit Road

Situated directly on a quiet beach (no road) of Jomtien-Sattahip just 9 km South of Central Pattaya. The Pinnacle Resort & Club Jomtien with all facilities is just 50 meter away on the same beach.

Rates are valid from now until 31 October 2002

Room Type	Single	Double	Triple	Extra Guest
Standard (01.May.02-31.Oct.02)	750	850	0	0
Deluxe (01.May.02-31.Oct.02)	850	950	1400	0
Junior Suite (01.May.02-31.Oct.02)	1400	1400	0	0

Above rates are nett in Thai Baht, inclusive of Service charge, VAT and Breakfast

[Pre-booking enquiries](#) or [To book a room](#)



56 rooms, suites and apartments in various categories. All rooms, suites or apartments are air-conditioned and have their own bathrooms with bathtub or shower. They are equipped with individual air-conditioners, refrigerators, TV with satellite and in-house movie channels and telephones. Most of the rooms have balconies or terraces.



Facilities in the adjacent [Pinnacle Resort & Club](#) which can be used by the Pinnacle Golden Beach Resort guests:

- 2 Tennis courts
- Candle light dinners around the pool with weekly Thai dances and folklore shows
- Beachbar with drinks and snacks
- Hourly shuttle bus to and from Pattaya, Taxi Service
- Thai Massage corner on the beach
- 4 Golf courses within 6 -20 Kms.
- Sail yacht rental and yacht trips
- Swimmingpool with children's paddle pool
- Children's playground

- Thai Speciality Restaurant directly on the beach
- Room Service
- Laundry Service
- Meeting Facilities
- Beach Volleyball
- Badminton
- Pool basketball
- Darts
- Table Tennis
- Snooker
- Croquet
- Free introduction to diving





37/2-11 Sukhumvit Road Pattaya

The Hotel's own 400 m white, sandy beach are cleaned twice daily. Sunshades and deckchairs at the beach and on the lawn are freely available to all hotel guests.

Rates are valid from now until 31 October 2002

Room Type	Single	Double	Triple	Extra Guest
Superior Room (01.May.02-31.Oct.02)	1300	1400	0	400
Junior Suite (01.May.02-31.Oct.02)	3000	3000	0	400

Rates are nett in Thai Baht, inclusive of Service charge, VAT and Breakfast

[Pre-booking enquiries](#) or [To book a room](#)



140 rooms are arranged in eight 3-floor buildings around a second, free size pool with a pool bar and a restaurant.

The other 30 rooms are located in bungalows (1 and 2 room types) on a separate plot of land about 70 meters from the other buildings but also directly at the beach.



All rooms with :

- individually controlled airconditioners
- Minibar
- Satellite TV and In-house movie channel

- Direct dial telephone system
- Bathroom with bathtub and showers
- Large balcony or terrace



- 2 Swimming pools
- Airconditioned Pub
- Children's paddle pool with sunshade
- 2 Tennis courts
- Large tropical garden with shade trees
- Children's playground
- 24 hours Room Service & Laundry Service
- 4 Golf courses nearby (6 - 20 km)
- Yacht rental and yacht trips
- Water sports (not operated by the Resort)

- Hourly shuttle bus to and from Pattaya, Taxi Service
 - Thai Massage corner on the beach
 - Weekly Folklore and Dance Shows
- Outdoor activities :**
- Beach Volleyball - Badminton
 - Darts - Table Tennis - Snooker
 - Pool basketball
 - Croquet game
 - Free introduction to diving



353 Phra Tamnuk Road Pattaya

Open in 1992 the Royal Cliff Grand provides all that the experienced leisure or business traveller could wish for. The beautifully designed rooms and suites all have large marble bathrooms with separate walk-in showers and double washbasins. All rooms are complemented by large sea-facing balconies with 2 sun-loungers and even a shower for cooling off ! The Royal Cliff Grand is aptly named, and is a true 5 star hotel from the large atrium lobby to the modern guest rooms

Rates are valid from now until 26 December 2002

Room Type	Single	Double	Triple	Extra Guest
Executive (11 Jan-26 Dec 02)	130	130	0	35
Grand Room (11 Jan-26 Dec 02)	160	160	0	35
One Bedroom Junior Suite (11 Jan-26 Dec 02)	190	190	0	35
One Bedroom Regency Suite (11 Jan-26 Dec 02)	280	280	0	35
Two Bedroom Regency Suite (11 Jan-26 Dec 02)	0	400	400	35

Rates are in US Dollars, exclusive of 10% service charge and applicable tax

[Pre-booking enquiries](#) or [To book a room](#)



Executive & Grand Room

Executive & Grand Rooms :

Stylishly decorated, all have sea-facing balconies with sunloungers/outside shower and luxuriously large marble bathrooms. The Grand Rooms have a larger bathroom than the Deluxe Rooms

Junior Suites :

Elegant one-bedroom suites with king-size bed and decadent marble bathroom opening up onto a light and airy lounge/dining area fronted by balconies offering unique views across the resort and bay.



Regency Suite



Services & Facilities :

- Check-out time 12 noon
- 24 hour room service
- 24 hour security
- Free Parking
- Helipads
- Concierge
- Electricity 220 volts
- Laundry, dry cleaning & pressing service
- Clinic with resident nurse and doctor on call
- Limousine services
- Currency Exchange
- Tour counter
- Beauty Salon / Barber / Hairdresser
- Shops
- Florist Counter
- Bakery
- Beach elevator
- Postal service
- Business Centre

Families & Children :

- Children's play area (indoor/supervised) and playground (outdoor)
- Children's pools
- Babysitting by arrangement
- Baby cots / High back chairs
- Children's menu

Sports & Recreation :

- 5 swimming pools (the swimming pool at the Royal Wing is exclusively for Royal Wing guests)
- Cliff Club (swimming pools, fitness centre, sauna / steam room, table tennis)
- 6 floodlit tennis courts & 2 practice courts
- Tropical park / garden with jogging trail
- Watersports - jet ski, water ski, scuba diving, deep sea fishing (watersports are not operated by the resort)
- 3-hole putting green within the resort / 18 championship standard golf courses in the area
- Resort catamaran (regular trips to nearby tropical islands, food & beverage service on board)

Royal Cliff Terrace



353 Phra Tamnuk Road Pattaya

Opened in 1971 and fully renovated in 2000, The Royal Cliff Terrace was the very first hotel to be built in the Royal Cliff Beach Resort. A low rise 5 storey building built into the cliff face and directly facing the gardens and sea-with just 64 Mini/Honeymoon Suites and 26 two bedroom Family Suites - the Royal Cliff Terrace is a charming alternative to the larger properties and appeals particularly to honeymooners and families

Rates are valid from now until 26 December 2002

Room Type	Single	Double	Triple	Extra Guest
Mini Suite/Honeymoon Suite (11 Jan-26 Dec 02)	120	120	0	35
Family Suite (11 Jan-26 Dec 02)	200	200	0	35

Rates are in US Dollars, exclusive of 10% service charge and applicable tax

[Pre-booking enquiries](#) or [To book a room](#)



Mini-Suites

Large room with small separate step-up lounge area with simple Thai style decor throughout. Beachfront balcony or terrace with sunloungers.

Family Suites

2-bedroom, 2 bathroom suites with central living room and balcony or terrace overlooking the beachfront.



All rooms & suites offer individual air-conditioning, private safe, balcony or terrace, satellite TV, in-house movies, private bathroom, minibar, IDD telephone, bathrobe, hairdryer



Services & Facilities :

- Check-out time 12 noon
- 24 hour room service
- 24 hour security
- Free Parking
- Helipads
- Concierge
- Electricity 220 volts
- Laundry, dry cleaning & pressing service
- Clinic with resident nurse and doctor on call
- Limousine services
- Currency Exchange
- Tour counter
- Beauty Salon / Barber / Hairdresser
- Shops
- Florist Counter
- Bakery
- Beach elevator
- Postal service
- Business Centre

Families & Children :

- Children's play area (indoor/supervised) and playground (outdoor)
- Children's pools
- Babysitting by arrangement
- Baby cots / High back chairs
- Children's menu

Sports & Recreation :

- 5 swimming pools (the swimming pool at the Royal Wing is exclusively for Royal Wing guests)
- Cliff Club (swimming pools, fitness centre, sauna / steam room, table tennis)
- 6 floodlit tennis courts & 2 practice courts
- Tropical park / garden with jogging trail
- Watersports - jet ski, water ski, scuba diving, deep sea fishing (watersports are not operated by the resort)
- 3-hole putting green within the resort / 18 championship standard golf courses in the area
- Resort catamaran (regular trips to nearby tropical islands, food & beverage service on board)

Siam Bayshore Resort



559 Beach Road, South Pattaya

The Siam Bayshore Resort has always been environmentally conscious and in 1993 received a 'Diploma of Merit' from the 'New International Hotel Association', a Paris based organization of international hotels and resorts, for implementing hotel policies that help to protect the environment. As one of Pattaya's original developments, it has been well tended, has its beach front groomed weekly, and has, in every sense, become one with nature.

Rates are valid from now until 31 October | 2002

Period	Deluxe Single	Deluxe (Twin/Double)	Deluxe Triple
16 Apr 02 - 31 Oct 02	Baht 2,150 nett	Baht 2,400 nett	Baht 3,400 nett

Rates are nett in Thai Baht, inclusive of American Breakfast, service charge and VAT

Enquiry or Booking



- In-house movies and satellite TV
- Individual air-conditioning control
- Private balcony
- Data ports for computer connections
- Mini-bar and refrigerator
- Convenient International Direct Dial Telephone service
- Coffee/tea maker and hair dryer in Deluxe Rooms
- Views overlooking the swimming pool and gardens or the Gulf of Thailand



Services and facilities :

- Non-smoking guest rooms
- Tour/travel/car rental desk
- Babysitting service/cribs
- Children's playground
- Medical doctor on call
- Thai traditional massage
- Seminar and banquet facilities
- 2 swimming pools
- 4 floodlit tennis courts
- Private Beach Club
- Pool/snooker room
- Exercise room
- Gift shop/news stand
- Over a dozen world-class golf courses nearby
- Numerous cultural, historical and interesting places to visit nearby

Siam Bayview Hotel



Soi10, Pattaya Second Road

As you would expect from a first-class hotel, the Siam Bayview prides itself on a blend of superb service amid a full range of amenities. The hotel has 270 rooms and caters to the needs of holiday-makers and conference delegates alike. As it has a shorefront location, in the centre of the beach promenade, the hotel is a very comfortable hub from which to explore the life and fun of a tropical resort.

Rates are valid from now until 31 October 2002

Period	Run of House (Single)	Run of House(Twin/Double)	Run of House (Triple)
16 Apr 02 - 31 Oct 02	Baht 1,850 nett	Baht 2,100 nett	Baht 2,950 nett

Rates are nett in Thai Baht, inclusive of American Breakfast, service charge and VAT

Enquiry or Booking



- In-house movies and satellite TV
- Convenient International Direct Dial Telephone service
- Data ports for computer connections
- Mini-bar and refrigerator
- Individual air-conditioning control
- Coffee/tea maker and hair dryer in Deluxe Rooms
- Private balcony (Bayview Tower only)
- Views overlooking mountains, city or Gulf of Thailand



Recreational Facilities :

- 2 swimming pools
- 2 floodlit tennis courts
- Table tennis and darts
- Pool table and board games
- Exercise room
- Water sports nearby: Parasailing, water skiing, scuba diving and fishing expeditions
- Over a dozen world-class golf courses nearby
- Numerous cultural, historical and interesting places to visit nearby

Services and Facilities :

- Non-smoking guest rooms
- Exclusive Corporate Floor
- Internet Cafe and Business Services Corner
- Tour/travel/car rental desk
- Babysitting service/cribs
- Medical doctor on call
- Seminar and banquet facilities
- Shops & His/Her Salon
- Massage service



217/27 Beach Road, Pattaya

Just over an hour journey from Bangkok, you'll receive a warm welcome at the Sunbeam Hotel Pattaya, located between Beach Road and Central Pattaya Road. The hotel is beautifully decorated with a fresh oceanic atmosphere.

Conveniently located close to Pattaya's many Shopping centers and unique nightlife.

Special Promotion & Package

Golden Golf Package

Click here for [Booking](#) Package

Rates are valid from now until 31 March 2003

Room Type	Single	Double	Triple	Extra Guest
Standard (1 Apr-14 Dec 02)	1400	1600	0	600
Superior (1 Apr-14 Dec 02)	1800	2000	0	600
Deluxe (1 Apr-14 Dec 02)	2200	2400	0	600

Rates are nett in Thai Baht, inclusive of American Breakfast, service charge and VAT

[Pre-booking enquiries](#) or [To book a room](#)



Deluxe Room



Superior Room



Suite Room

Where bliss begins the moment you walk in ... Comfort, privacy and countless entertainment possibilities await in a cool, calm environment where modern facilities blend with the authentic taste of Thailand. This 12-storey hotel includes a delightful lobby and comprises 256 beautifully decorated Superior and Deluxe rooms and Suites in singles, doubles and family rooms. Every room features comprehensive facilities for your comfort and pleasure, including both hot tub and shower, mini bar, international and local TV. program and 24 hours room service. And each with its own balcony to catch a refreshing sea breeze and admire the charms of Pattaya.



Service and Facilities :

- Room service
- Fully Stocked Minibar
- Medical Doctor on call
- Tour/Travel Desk
- Daily Laundry Services
- Safety Deposit Boxes
- Concierge
- Currency Exchange

- Separate Group Check-in Area
- Business Center
- Internet Service
- Limousine Service
- Thai Traditional Massage
- Foot Massage Service
- Outdoor Swimming Pool
- Social Dancing Club

- Wind Surfing
- Parasailing
- Scuba
- Fishing
- Go Karts
- Banana Boat
- Jet Ski
- Scouter

Sunshine Garden Hotel



240/3 Pattaya-Naklua Road, Pattaya

Sunshine Garden Hotel is just the perfect place for your holidays. Plenty of sun, lush tropical garden, comfort of the room, courteous service and friendly atmosphere; all these will make you feel right at home. The hotel was originally built to provide all guests with these pleasures at yet very affordable rates! For us, guest satisfaction is our commitment. At Sunshine Garden Hotel, hospitality is about making all guests an unforgettable holidays.

Rates are valid from now until 31 October 2002

Room Type	Single	Double	Triple	Extra Guest
Standard (16 Mar-31 Oct 02*)	690	690	0	220
Junior Suite (16 Mar-31 Oct 02*)	1380	1380	0	220

Rates are nett in Thai Baht and inclusive of service charge and VAT.

Junior Suite Room (1 Bedroom with 2 Double beds & living area)

[Pre-booking enquiries](#) or [To book a room](#)



All 114 standard rooms, 2 suites, and 16 cosy bungalows are perfectly set amidst the well-landscaped garden. Most rooms offer pool view or garden view. Every guest room is fully air-conditioned and equipped with bathtub or shower, hot and cold water, and a balcony for your private relaxation. Other amenities include TV with satellite programs include a German Channel, Deutsche Welle, fully-stocked minibar and fridge, and telephone. Safety deposit boxes are available free of charge at the front desk.



Our large swimming pool with kid pool are at the center of our hotel and are surrounded by the relaxing ambience of well-designed tropical garden. The pool is equipped with bubbling jet spray for your relaxation.

Guests always have a choice of dining at the Garden Terrace Restaurant. The restaurant offers favourite international menus and famous Thai food in a casual atmosphere. A variety of refreshing drinks and cocktails or snacks and food served at the pool side from late morning until sunset. Room service is available for your own convenience.

Sunshine Hotel



217/1 Beach Road, Pattaya City

Sunshine Hotel is located in soi 8, the heart of nightlife entertainment area of Pattaya. Soi 8 has been known as heaven for night entertainment and funlovers for years. Thus, our location is ideal for guests who would like to go out late at night for all kinds of night entertainment. However, it may not be suitable for guests who really like to relax in quiet area. For family guests or guests who prefer a more quiet place, we do recommend our sister hotels which are Loma Hotel, Sunshine Garden Hotel, and The Green Park Resort which are located in North Pattaya area which is more quiet.

Rates are valid from now until 31 October 2002

Room Type	Single	Double	Triple	Extra Guest
Standard (16 Apr-31 Oct 02)	500	500	0	0

Rates are nett in Thai Baht and inclusive of service charge and VAT

[Pre-booking enquiries](#) or [To book a room](#)



Each of our hotel rooms has an individually adjustable air-conditioner, private bathtub or shower with hot and cold water, colour TV with international and local satellite programs including a German Channel, Deutsche Welle, refrigerator with well-stocked mini bar, and telephone



2 swimming pools with garden surrounding are provided for your private relaxation and sunbathing. Snooker table and table tennis are provided for your pleasure.

We offer you both air-conditioned room for your own privacy or our scenic opened air pool terrace. Thai, international and seafood specialties are offered 24 hours. Snacks and a variety of beverages are available all day long at the pool side.

Sunshine Residences



217/1 Beach Road, Pattaya City

The new building of Sunshine Hotel called "Sunshine Residences" is 12 floors high and all rooms from 8th Floor to 12th Floor offering the view of Pattaya bay. In total 77 rooms are added which can be divided into categories as follows : 4 deluxe seaview rooms, 5 superior seaview rooms, 6 superior rooms, 26 standard seaview rooms, and 36 standard rooms.

Rates are valid from now until 31 October 2002

Room Type	Single	Double	Triple	Extra Guest
Standard (16 Mar-31 Oct 02)	700	700	0	300
Standard (13-15 Apr 02)	840	840	0	300
Standard Seaview (16 Mar-31 Oct 02)	800	800	0	300
Standard Seaview (13-15 Apr 02)	960	960	0	300
Superior (16 Mar-31 Oct 02)	900	900	0	300
Superior (13-15 Apr 02)	1080	1080	0	300
Superior Seaview (16 Mar-31 Oct 02)	1000	1000	0	300
Superior Seaview (13-15 Apr 02)	1200	1200	0	300
Deluxe Seaview (16 Mar-31 Oct 02)	1100	1100	0	300
Deluxe Seaview (13-15 Apr 02)	1320	1320	0	300

Rates are nett in Thai Baht, inclusive of service charge and VAT

[Pre-booking enquiries](#) or [To book a room](#)



Each of our hotel rooms has an individually adjustable air-conditioner, private bathtub or shower with hot and cold water, colour TV with international and local satellite programs including a German Channel, Deutsche Welle, refrigerator with well-stocked mini bar, and telephone



2 swimming pools with garden surrounding are provided for your private relaxation and suntanning. Snooker table and table tennis are provided for your pleasure.

We offer you both air-conditioned room for your own privacy or our scenic opened air pool terrace. Thai, international and seafood specialties are offered 24 hours. Snacks and a variety of beverages are available all day long at the pool side.

The Green Park Resort



240/3 m.5 Soi Pingpa, North Pattaya City

The Green Park Resort, a genuine resort in the heart of Pattaya built in Temporary Thai style and surrounded by green tropical garden. Here you can relax yourself under the sun in and around our 1,000 square meters free-form swimming pool, one of the biggest swimming pools in Pattaya.

Rates are valid from now until 31 October 2002

Room Type	Single	Double	Triple	Extra Guest
Standard (16 Mar-31 Oct 02*)	1056	1056	0	330
Junior Suite (16 Mar-31 Oct 02*)	1980	1980	0	330
Family Suite (16 Mar-31 Oct 02*)	2970	2970	2970	330

Rates are nett in Thai Baht and inclusive of service charge and VAT.

Junior Suite Room - 1 Bedroom & 1 Living Room, Family Suite - 2 Bedrooms & 1 Living Room

[Pre-booking enquiries](#) or [To book a room](#)

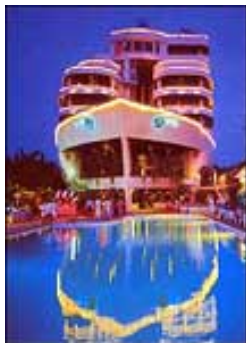


With 117 standard rooms, 3 junior suites, 3 family suites, 16 standard bungalows, and 1 family bungalow, you can choose any style of room that best suites your requirement. Each room has its own private balcony while each bungalow has its own terrace. Each room features individual temperature - controlled air-conditioning, private radio with cassette tape player, remote controlled TV with Thai and international satellite programs including Deutsche Welle, a German channel, fully-stocked mini bar, direct dial telephone for local calls. Bathrooms are equipped with shower or bathtub with hot and cold water.



We boast that we have one of the biggest swimming pool in Pattaya covering total area of over 1,000 square meter. The swimming lagoon with a children pool are surrounded by our landscaped garden. There are even whirlpools at corners of children pool. And with its swim-up bar, you can enjoy your favourite drinks even when you are in the pool.

A-One The Royal Cruise Hotel



From the moment you first step aboard The Royal Cruise Hotel you'll find yourself surrounded by opulence and an attention crew to tend to your every need.

The stylish interior of teakwood, marble, and granite will entice you as you begin your voyage.

499 North Pattaya Road, Pattaya City

Rates are valid from now until 31 October 2002

Period	Single	Twin/Double	Triple
16 Apr - 31 Oct 2002	Baht 1,400 nett	Baht 1,400 nett	Baht 2,100 nett

Rates are nett in Thai Baht, inclusive of American Breakfast, service charge and VAT

Enquiry or Booking



- Air Condition
- Radio (Auto Tuning)
- Colour Television
- In House Video Movies
- Baby Cot
- Telephone (IDD System)
- Adaptors
- Terrace



- Refrigerator
- Mini Bar
- Daily Fresh Towels
- Shaver Outlet
- Bathroom (Bath-Tub/Shower)
- Hair Dryer (On request)
- Voltages in use 220 v
- Wall to wall carpet

11 Deluxe Cabins (33 sq.m) ; Located on 7th and 8th deck with full facilities and all cabins with large balcony and sea-view

12 Family Suites (48 sq.m) ; Well decorated with one double bed and one twin bed. All rooms face the sea and mountain view. Each room has big sofa for your comfort and full equipped with private balcony.

1 Junior Suite (45 sq.m) ; Located on 7th deck in front of the ship with large balcony and the room size in 45 square metres with very beautiful decoration

11 Royal Suites (76 sq.m) ; One bedroom and one living room. Each Royal Suite has large private balcony in front of the ship. Fully equipped with private bar counter in living room for your little private party.



- Luggage storeroom
- Car park
- Currency exchange
- Security 24 Hrs.
- Gift shop/Drugstore
- Room Service 24 Hrs.



- Laundry/Dry cleaning
- Safe Deposit box
- Mail/Postal service
- Swimming Pool, Children Pool, Jacuzzi
- Facsimile



- Beauty salon
- Tur Desk
- Florist shop
- Poolside snack/Drinks
- Non-Smoking Decks

The Royal Wing



353 Phra Tamnuk Road Pattaya

Opened in 1986 and fully renovated in 2001, the Royal Wing is almost a "hotel within a hotel", an exclusive retreat comprised of 84 one bedroom Royal Wing Suites and 2 three bedroom Presidential Suites. The Royal Wing Suites all have a lounge, bedroom with ensuite bathroom, a guest' cloakroom and 2 flower-filled balconies. There is a private pool area with beautiful gardens and famous Royal Wing "pool Butler" service. The accent on the highest levels of personal service and exclusivity sets the Royal Wing apart from the rest of the resort.

The new Royal Wing also has a separate spa facility located within the hotel. A perfect complement to the Cliff Spa at the Royal Cliff Grand, the new spa provides guests at Royal Wing the ultimate in rest, relaxation and rejuvenation

Rates are valid from now until 26 December 2002

Room Type	Single	Double	Triple	Extra Guest
Royal Wing Suite (11 Jan-26 Dec 02)	210	210	0	35
Presidential Suite (11 Jan-26 Dec 02)	770	770	0	35

Rates are in US. Dollars, exclusive of 10% service charge and applicable tax

[Pre-booking enquiries](#) or [To book a room](#)



Royal Wing Suites

Royal Wing Suites :

Elegantly decorated one-bedroom suites with separate lounge and two flower-filled balconies overlooking the landscaped pool and Royal Cliff Bay. Marble bathroom and guest cloakroom.

Presidential Suites :

A mini-apartment with private butler and beach sala. 3-bedrooms, 3 bathrooms, 3 lounges as well as a central dining area and guest cloakrooms, decorated in classic Thai style.



Presidential Suites

All rooms & suites offer individual air-conditioning, private safe, balcony or terrace, satellite TV, in-house movies, private bathroom, minibar, IDD telephone, bathrobe, hairdryer



Services & Facilities :

- Check-out time 12 noon
- 24 hour room service
- 24 hour security
- Free Parking
- Helipads
- Concierge
- Electricity 220 volts
- Laundry, dry cleaning & pressing service
- Clinic with resident nurse and doctor on call
- Limousine services
- Currency Exchange
- Tour counter
- Beauty Salon / Barber / Hairdresser
- Shops
- Florist Counter
- Bakery
- Beach elevator
- Postal service
- Business Centre

Families & Children :

- Children's play area (indoor/supervised) and playground (outdoor)
- Children's pools
- Babysitting by arrangement
- Baby cots / High back chairs
- Children's menu

Sports & Recreation :

- 5 swimming pools (the swimming pool at the Royal Wing is exclusively for Royal Wing guests)
- Cliff Club (swimming pools, fitness centre, sauna / steam room, table tennis)
- 6 floodlit tennis courts & 2 practice courts
- Tropical park / garden with jogging trail
- Watersports - jet ski, water ski, scuba diving, deep sea fishing (watersports are not operated by the resort)
- 3-hole putting green within the resort / 18 championship standard golf courses in the area
- Resort catamaran (regular trips to nearby tropical islands, food & beverage service on board)

URL : <http://www.e-biz-travel.com>

Tel : +66 2636-0232 to 3

E-Mail : susan@e-biz-travel.com

Fax : +66 2236-3386